

## PKD infection in wild trout in Denmark with focus on interactions between wild and farmed fish

**Kurt Buchmann and Alf Skovgaard**  
Laboratory of Aquatic Pathobiology  
Department of Veterinary Disease Biology  
Faculty of Health and Medical Sciences  
University of Copenhagen  
Denmark



### PKD

High mortalities due associated with PKD have been observed in Swiss (Wahli et al. 2002 and 2007) and Norwegian rivers (Sterud et al. 2007; Mo et al. 2011) – first year juveniles of trout and salmon seem particularly susceptible.

PKD – Proliferative Kidney Disease – is a parasitic disease caused by the myxozoan *Tetracapsuloides bryosalmonae*

- Common occurrence in traditional rainbow trout farms connected to natural streams
- The life cycle was previously unknown but in the late 1990es molecular tools assisted elucidation of the life cycle (Longshaw et al. 1999)

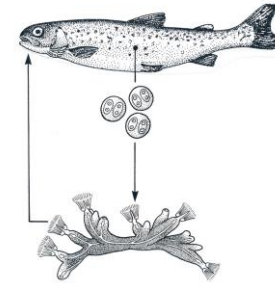
### Symptoms of PKD

- External clinical signs:
  - pale gills due to anaemia
  - darkened body
  - abdominal distension
  - bilateral exophthalmia
  - lethargy
- Internal clinical signs:
  - renal swelling, often more prominent posteriorly
  - kidney turns from dark purple to red/pink or mottled grey
  - spleen is often enlarged and may have a rough appearing surface and liver may be yellow.
- Microscopic signs:
  - severe granulomatous response
  - degeneration of kidney tissue
  - parasite cells visible in renal tissue.
- Definitive diagnosis relies upon the detection of *T. bryosalmonae* in samples of fish tissue.

## Effects of PKD

- Mortality highly variable
- Infected fish are susceptible to secondary infections (then often accompanied with high mortality)
- Fish may be superficially healthy, but can be very sensitive to handling and transport – susceptible to stress

(De Kinkeling &amp; Lorient 2001)

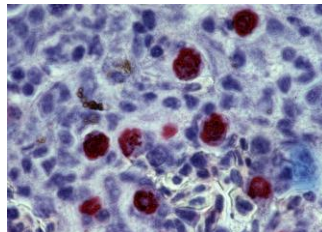
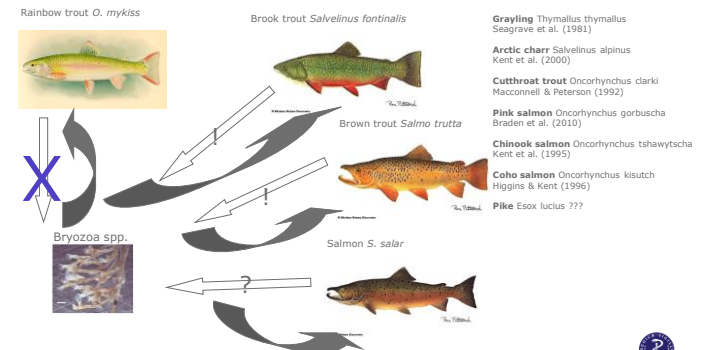
*Tetracapsuloides bryosalmonae* life cycle

Buchmann &amp; Bresciani 2001



## Diagnosis based immunohistochemical and lectin histochemical techniques

Rainbow trout kidney section with *T. bryosalmonae* spores visualized by use of biotinylated *Bandeirea simplicifolia* lectins, avidin and FAST red

Transmission of *Tetracapsuloides* in Europe

(Morris &amp; Adams 2006; Grabner &amp; El-Matbouli 2008)



Recent development  
in Denmark

Model trout farm



A survey of *T. bryosalmonae* in Danish salmonids:  
Rainbow trout, brown trout and Atlantic salmon



Yellow dots: farms Red dots: natural streams



Fish (0+) collected November 2008 and 2009

Brown trout *Salmo trutta*: 112  
From five freshwater streams in Jutland, Funen and Zealand

Atlantic Salmon *Salmo salar*: 31  
From river Varde å

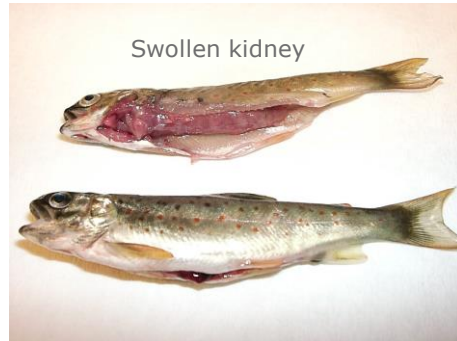
Rainbow trout *Oncorhynchus mykiss*: 37  
From three freshwater farms



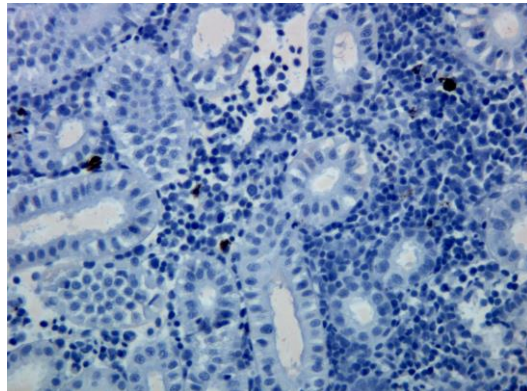
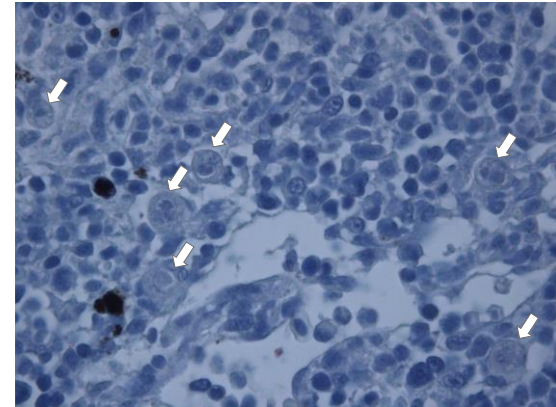
Faculty of Health and Medical Sciences

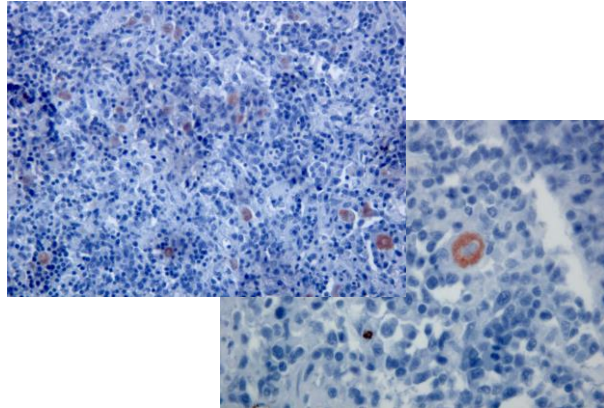
*Salmo trutta*  
Normal appearance of kidney



*Salmo trutta* from a Danish freshwater stream*Salmo trutta* from a Danish freshwater stream

Healthy looking trout kidney – histological section

Trout kidney with PKD. Arrows = *T. bryosalmonae*

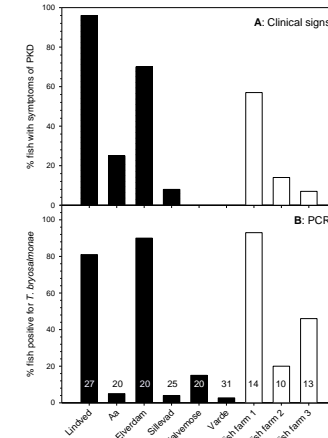
Lectin-staining of *T. bryosalmonae*

## PKD infection in traditional earth pond systems

Infection expected if water from natural streams with infected brown trout and bryozoans are present in the water system

## Detection of PKD using PCR

Black bars: brown trout  
Except Varde (salmon)  
White bars: Rainbow trout



## PKD in model trout farms based on recirculation of water

- Avoiding intake of stream water (using spring/bore hole water)
- No intermediate hosts in the fish farm system
- No transmission from fish to fish
- No PKD infection to be expected except if infected fish are introduced from traditional earth pond systems connected to natural streams



## Conclusions

*Tetracapsuloides bryosalmonae* is common in Danish streams and rivers.

A high percentage of wild Brown trout are infected with *T. bryosalmonae*.

Clinical PKD has been recorded in wild salmonids in Denmark.

Effects on wild host populations in Denmark are unknown.

The increasing use of model trout farms based on recirculation of groundwater will reduce the PKD impact on rainbow trout production in Denmark

Problems may continue in traditional trout farms



Thank you for your attention

