

Emerging skin disorders of Rainbow Trout: UK overview

Jason Mewett,
Fish Health Inspector



Background

Increased incidence in salmonid skin conditions in recent years (mainly Rainbow Trout affected)

Strawberry Disease (SD)
Red Mark Syndrome (RMS)
Puffy Skin (PS)

Cherry Fin (CF)

Cefas

Strawberry Disease



Cefas

RMS



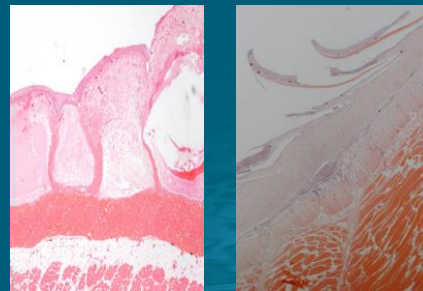
Cefas

Puffy Skin Disease

- Irene will cover this one!!

Cefas

Puffy vs RMS



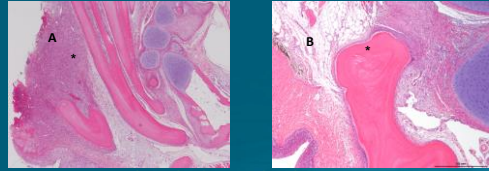
Cefas

Cherry Fin



Cefas

Cherry Fin



Historical features of sections through 'cherry fin' lesions. A. Low power view showing the base of the pectoral fin and associated fin ray with a marked inflammatory response (*); B. Section through bone showing chronic inflammation (*) affecting region between the bone and adjacent cartilage.

Cefas

Questions and discussion

- How many of you have seen these conditions?
- Are they an issue for your farms?
- Any thoughts?
- Thank you

Cefas