

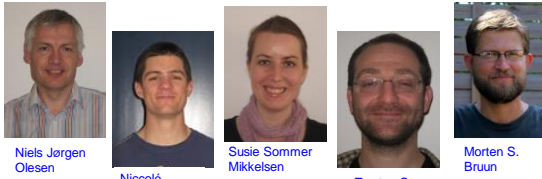
## EURL-Fish in 2014

### EURL-Fish work done in 2014

First year in Copenhagen.

*Niccolò Vendramin, Morten S. Bruun, Susie Sommer Mikkelsen, Anemone Ojala and Torsten Boutrup and Niels Jørgen Olesen*

National Veterinary Institute



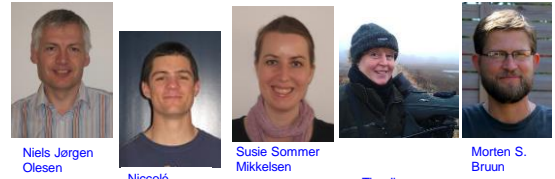
Niels Jørgen Olesen

Niccolò Vendramin

Susie Sommer Mikkelsen

Torsten S. Boutrup

Morten S. Bruun



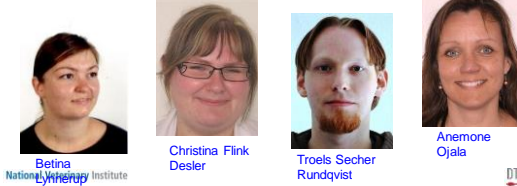
Niels Jørgen Olesen

Niccolò Vendramin

Susie Sommer Mikkelsen

Tine Iburg

Morten S. Bruun

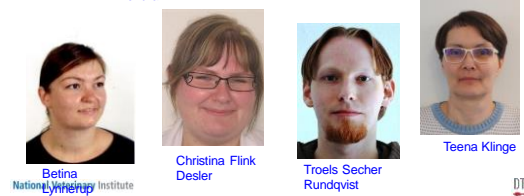


Betina Lyngby  
National Veterinary Institute

Christina Flink Desler

Troels Secher Rundqvist

Anemone Ojala

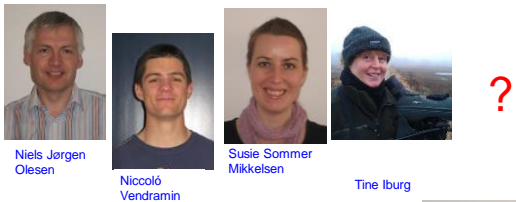


Betina Lyngby  
National Veterinary Institute

Christina Flink Desler

Troels Secher Rundqvist

Teena Klinge

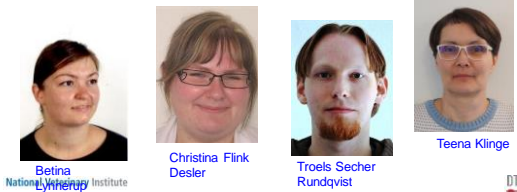


Niels Jørgen Olesen

Niccolò Vendramin

Susie Sommer Mikkelsen

Tine Iburg



Betina Lyngby  
National Veterinary Institute

Christina Flink Desler

Troels Secher Rundqvist

Teena Klinge



### EURL-Fish work program 2014

#### 5 main objectives

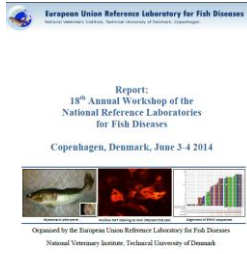
- 1. Coordination and training
- 2. Proficiency test
- 3. Reagents and products
- 4. Scientific advice and activities
- 5. Missions

#### 20 subgoals

National Veterinary Institute



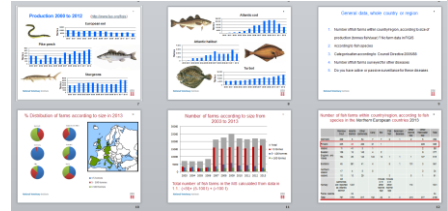
1-1,1-2 Organise and prepare for the 18th Annual Meeting for the NRLs and produce a report from the Annual Meeting



National Veterinary Institute



1-3 Collect and report data on the fish diseases situation in EU



National Veterinary Institute



1-4 Facilitate and provide training in laboratory diagnosis: EURL training courses 2014



National Veterinary Institute



2-1, 2-2 Prepare and report the Annual Inter-laboratory Proficiency Test.

PT1-2014 for identification of: VHSV, IHNV, EHN, SVCV and IPNV and PT2 identification of: CyHV-3 (KHV) and ISAV



National Veterinary Institute



3-1 Supply reference reagents to the NRLs in Member States

Materials supplied by the EURL

On request, the EURL supplies material to other laboratories in Member States and Third Countries to aid in the diagnosis and characterisation of fish diseases.

National Veterinary Institute



G24 IHNV reference set from Jim Winton, et al. OIE Ref lab for IHN

Information for the IHNV G24 Reference set: 24 isolates of infectious hematopoietic necrosis virus USGS Western Fisheries Research Center, Seattle, Washington, USA

National Veterinary Institute



**3-2 Production of antisera against selected isolates when necessary**

13

In 2014 no new productions of antisera were needed and our stocks of supernatants from hybridoma cells producing monoclonal antibodies were sufficient for the year

**3-3 Update and maintain a library of isolates of ISAV, VHSV and IHNV, KHV and EHNV**

14

- Several isolates of the listed viruses VHSV, IHNV and KHV were received and stored in our library during 2014.

**3-4 Maintain a library of tissue material from fish infected with listed pathogens**

15

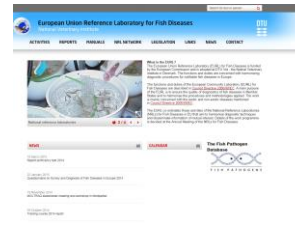
Our repository of positive naturally infected tissue from VHSV, IHNV and IPNV infected fish, has been maintained, as well as organ material from negative controls. Tissue material from Atlantic salmon and rainbow trout infected with piscine reovirus (PRV) and rainbow trout infected with virus Y have been stored as well.



**4-1 Update the webpage for the EURL, [www.eurl-fish.eu](http://www.eurl-fish.eu)**

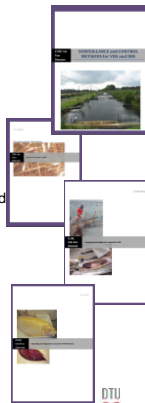
16

The EURL website ([www.eurl-fish.eu](http://www.eurl-fish.eu)) is a notice board, where NRLs and other interested parties can access relevant information and previous reports concerning the activities coordinated by the EURL and relevant upcoming events in the Union.



**4-2 Update the diagnostic manuals for VHS, IHN, ISA, KHV disease, EHN and EUS on the EURL web page**

- 2-day meeting was held in Cph on KHV sampling and diagnostic procedures.
- Significant changes from the former versions were accepted and recommended for inclusion in the final decision. Among changes were
- The splitting of sampling and diagnostic tests for diagnostic and surveillance purposes, respectively.
- Inclusion of real-time PCR as the method of choice for surveillance.
- Specification on how to define a CyHV-3 strain.



**4-3 Fishreflabnet: Maintain and further develop the interactive network with the NRLs, Fishreflabnet, in order to promote a more proactive data sharing and communication with and between reference laboratories in member states.**

18

- A new e-mail group was created in 2012: VET-EURL with approximately 100 colleagues subscribing. Official communication and updates of interest to the scientific community are delivered periodically.
- Furthermore this tool is used for newsletters, scientific updates and announcements from the EURL. Fish like announcements and invitations for the Annual Workshop or publication of content in the ampoules from the proficiency test or on the final Inter-laboratory Proficiency test report. In addition the e-mail group is used for announcing other workshops, training courses and conferences and new publications of interest for the NRL Fish network

19

**4-4 Identify and characterise selected isolates of listed viruses**

- In 2014 a number of virus isolates, sera and other reagents were received for further characterisation at the EURL and for storing in our virus library

Member States and countries outside EU		
Material received	Laboratories	Units
Diagnostic material for virology	6	56 samples
Diagnostic material for PCR	8	67 samples
Diagnostic material for bacteriology	1	1 sample
PCR control material	1	2 sample
Serum	1	88 samples
Other material	0	0 samples

National Veterinary Institute



20

**4-5 Update and expand [www.fishpathogens.eu](http://www.fishpathogens.eu) with more pathogens**

The new design of fishpathogens.eu has gone live. Furthermore the new betanoda database is now up and running with 59 isolate reports and 108 sequence reports. The sequence matcher function has been enhanced with color coding for each genotype and works in conjunction with all databases in fishpathogens.eu.

A new article "Fishpathogens.eu/noda: a free and handy online platform for Betanodavirus targeted research and data sharing" concerning the betanoda database has been accepted for publication in Journal of Fish Diseases.

A new database for SAV is being established in collaboration with the Norwegian Veterinary institute



National Veterinary Institute

21

**4-6 Perform molecular epidemiology analysis to improve knowledge on diseases spreading mechanisms of viral pathogens**

- Bang Jensen, Annette Kjær Ersbøll, Henrik Korsholm, Helle Frank Skall and Niels Jørgen Olesen (2014) Spatio-temporal risk factors for Viral Haemorrhagic Septicaemia (VHS) in Danish aquaculture. Diseases of Aquatic Organisms 109: 87–97

National Veterinary Institute



22

**4-7 Real-time PCR: Assessment and standardisation of real-time PCR tests for the diagnosis, identification and typing of the listed non-exotic fish diseases.**

**4-8 Emerging diseases: In collaboration with specialised experts WW to review selected emerging fish diseases in Europe and assess their potential listing as exotic or non-exotic diseases**

National Veterinary Institute



23

**5-1 Missions: Organizing missions to relevant laboratories. Missions will focus on NRLs where on-site communication would be beneficial. As collaboration with NRLs in 3rd countries from where EU is importing large amount of fish**

**5-2 Attending missions, international meetings and conferences in order to be updated on emerging and listed fish diseases.**

National Veterinary Institute



24

**20th Annual Workshop 2016**

- When?
- Where?



National Veterinary