

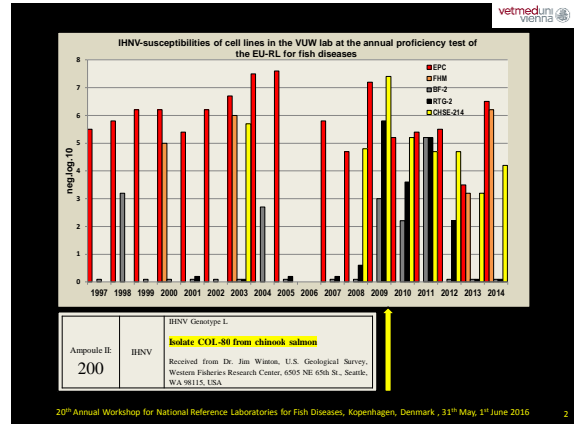
vetmed.univie.ac.at

USEFULNESS OF EMBRYONIC SALMON CELLS (CHSE-214 AND SSE-30) FOR IHNV DIAGNOSIS

Oskar Schachner, Andrea Dressler, Mansour El-Matbouli

Department for Farm Animals and Veterinary Public Health, Fish Medicine and Livestock Management,
University of Veterinary Medicine Vienna, Austria

20th Annual Workshop for National Reference Laboratories for Fish Diseases, Copenhagen, Denmark, 31st May, 1st June 2016



vetmed.univie.ac.at

Fryer et al., 1965:

20th Annual Workshop for National Reference Laboratories for Fish Diseases, Copenhagen, Denmark, 31st May, 1st June 2016

vetmed.univie.ac.at

CHSE-214
1 month p.s.

20th Annual Workshop for National Reference Laboratories for Fish Diseases, Copenhagen, Denmark, 31st May, 1st June 2016

vetmed.univie.ac.at

McCain, 1970:

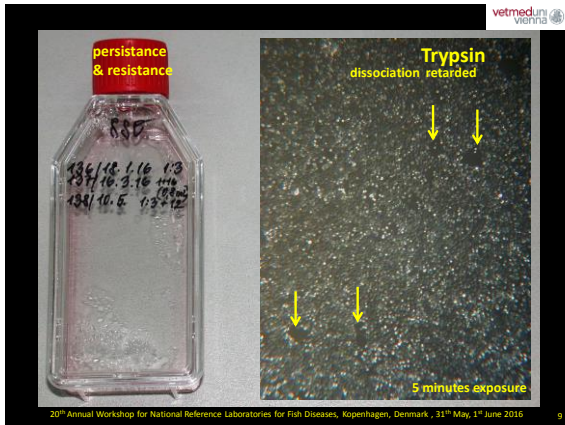
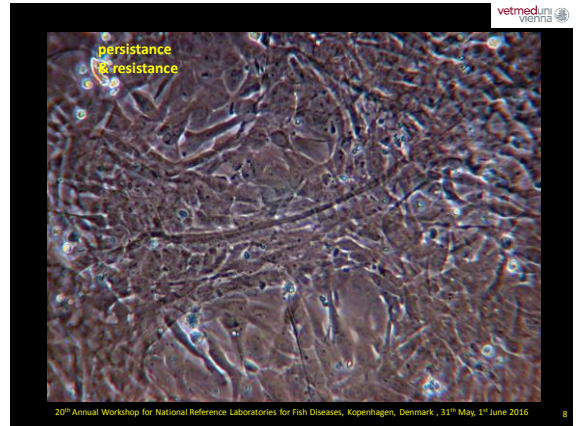
SSE-30
3 month p.s.

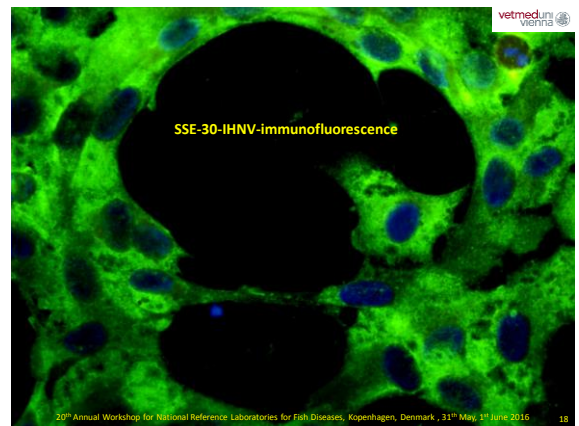
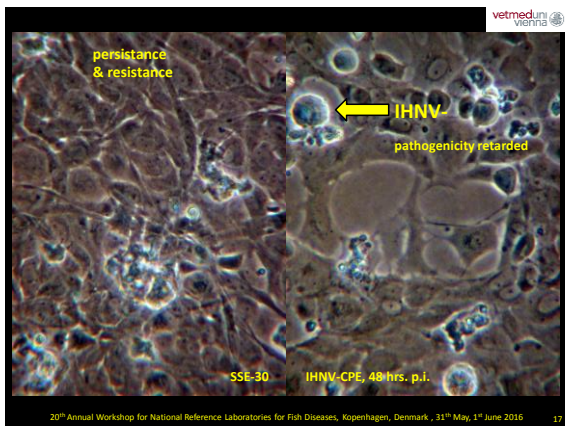
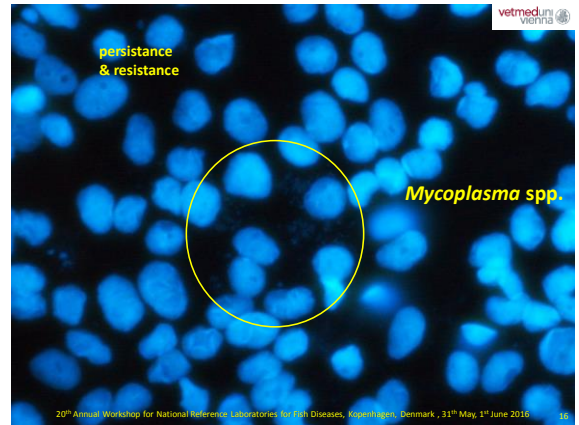
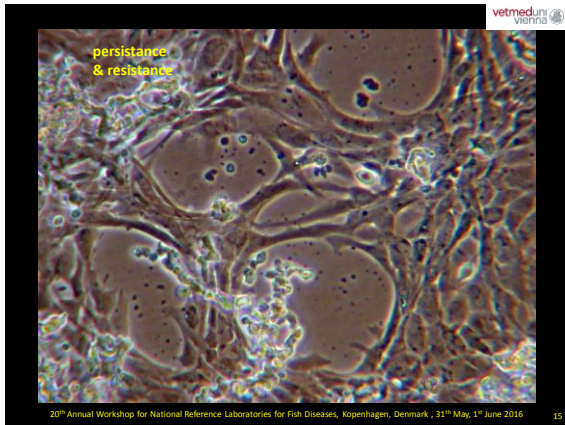
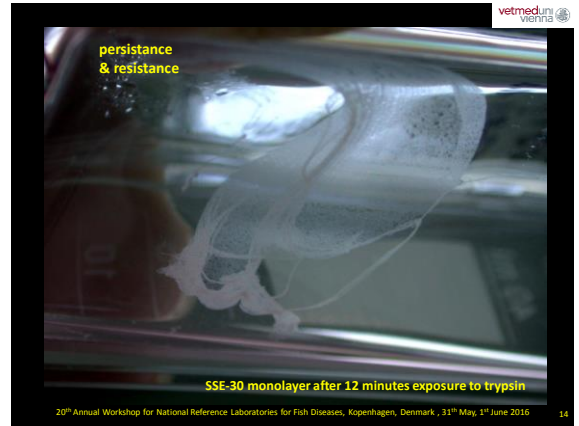
20th Annual Workshop for National Reference Laboratories for Fish Diseases, Copenhagen, Denmark, 31st May, 1st June 2016

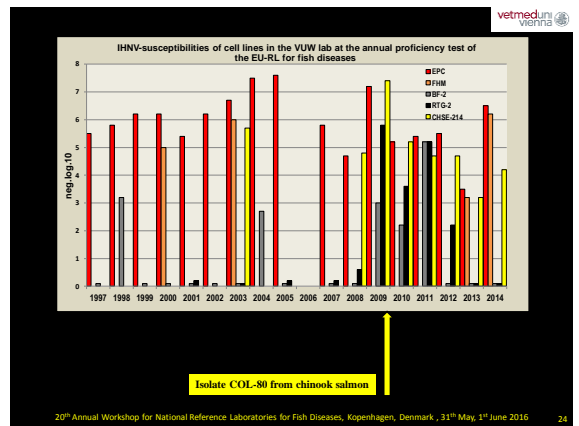
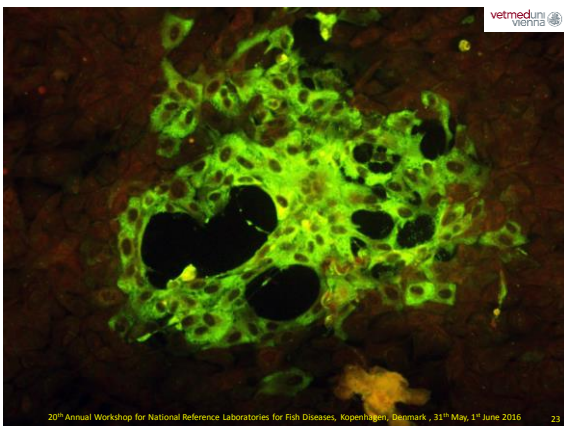
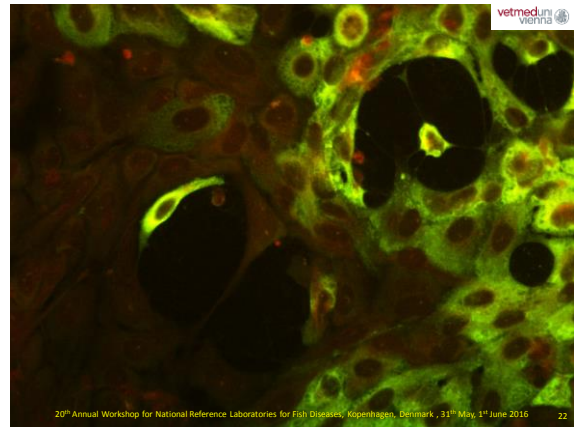
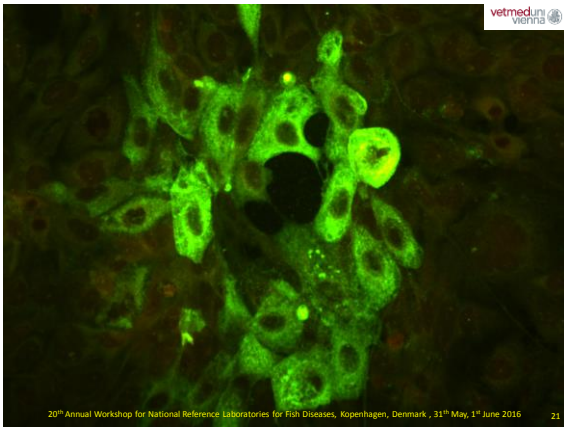
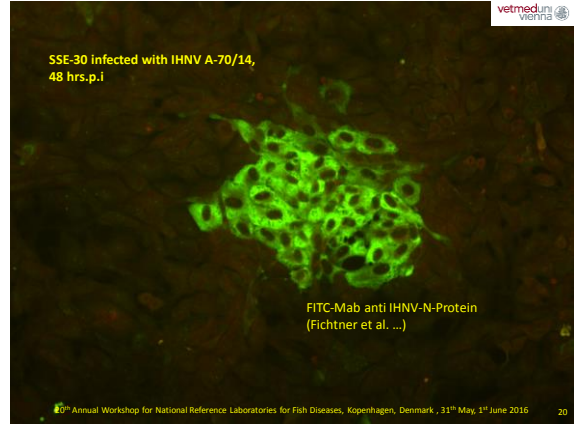
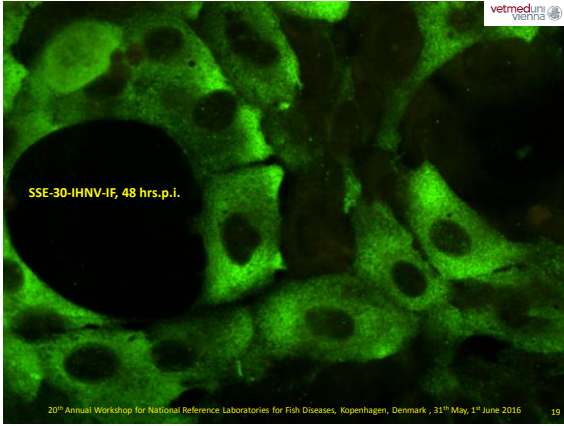
vetmed.univie.ac.at

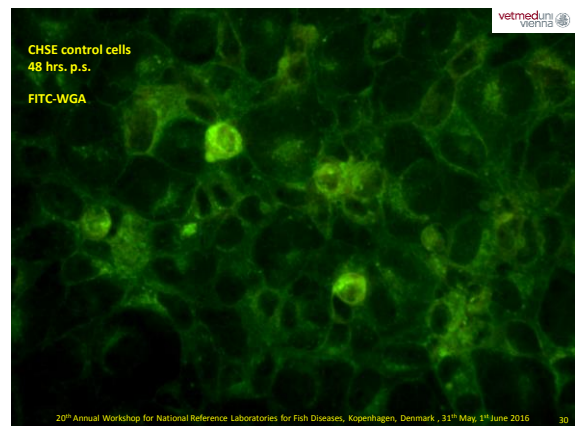
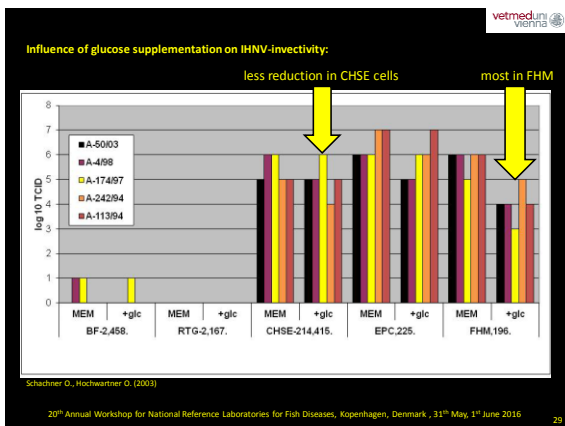
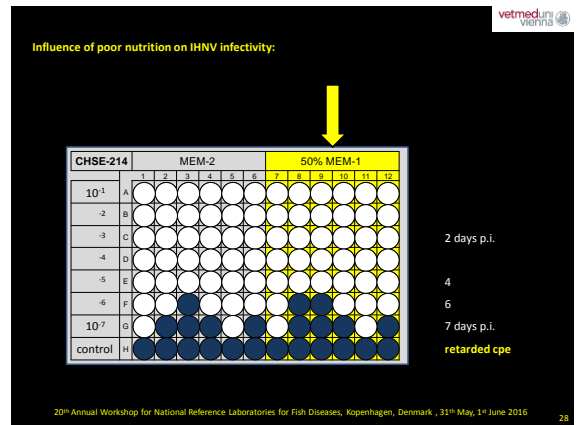
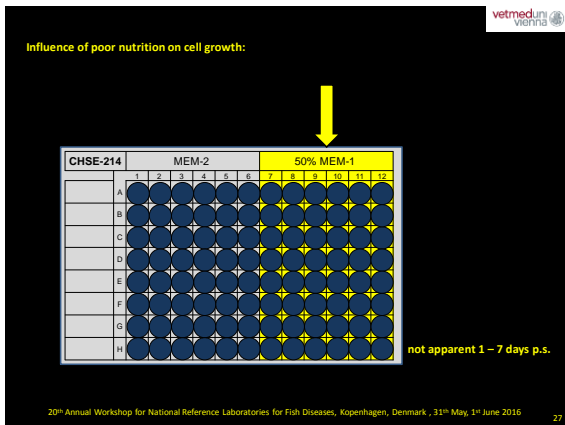
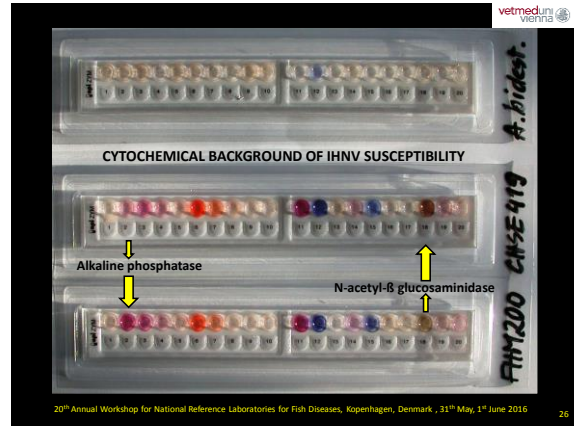
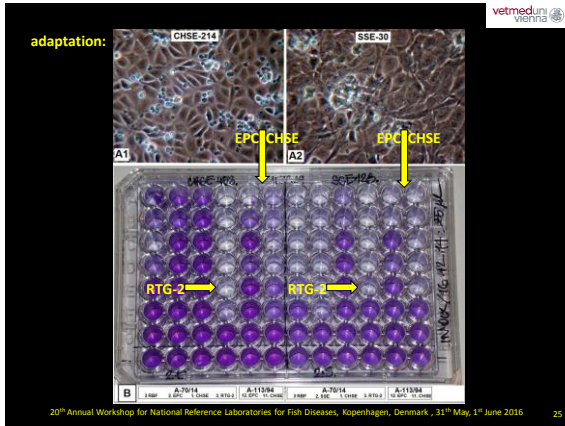
SSE-30
4 days p.s.

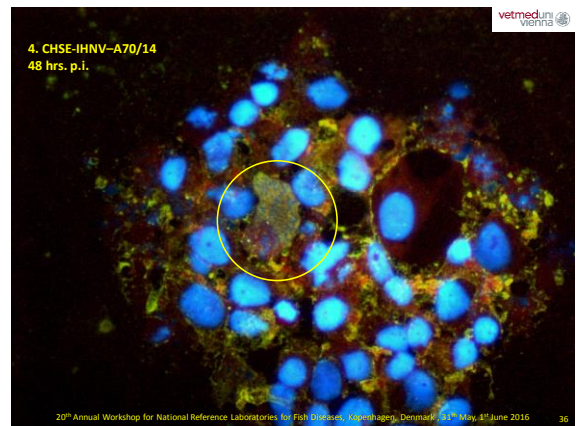
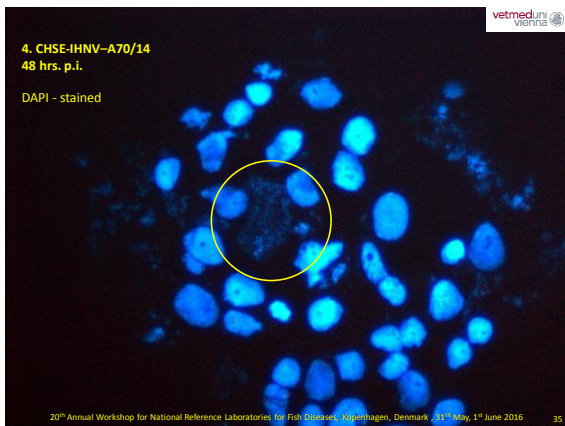
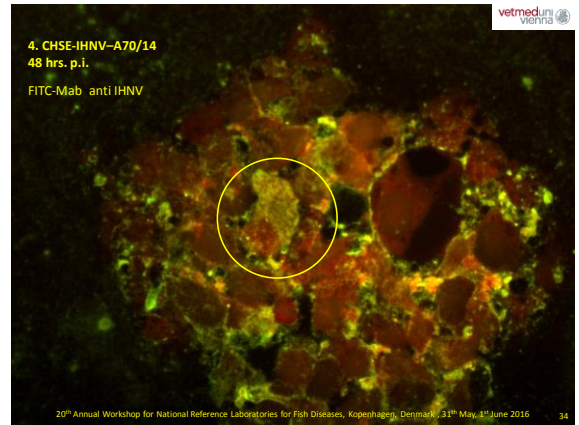
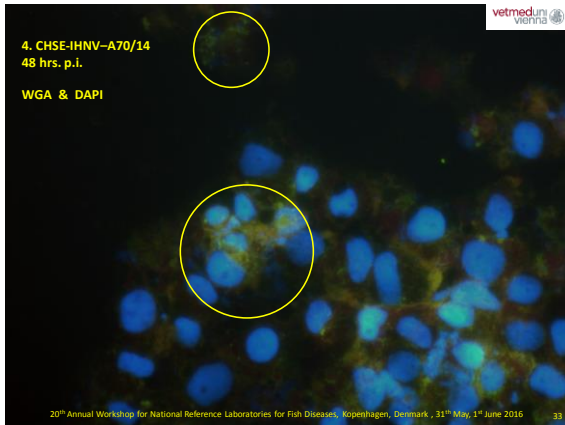
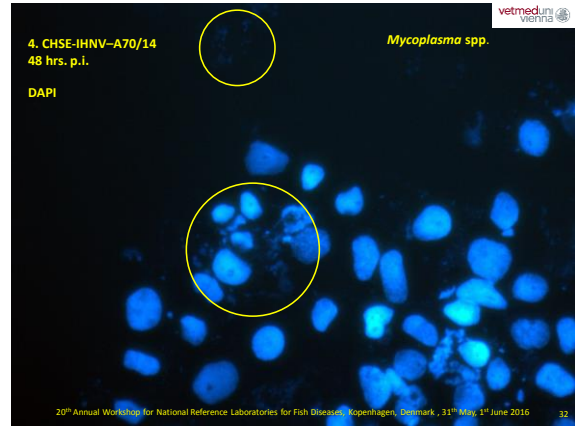
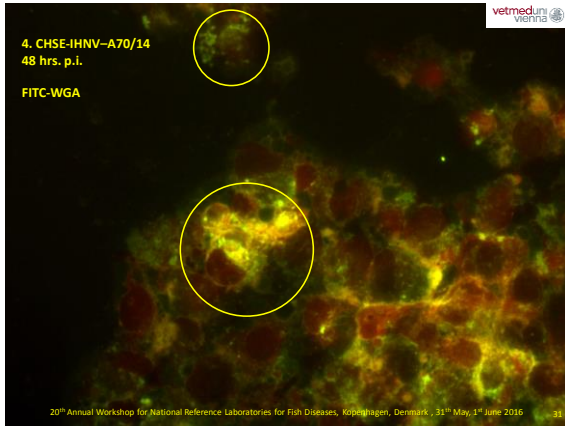
20th Annual Workshop for National Reference Laboratories for Fish Diseases, Copenhagen, Denmark, 31st May, 1st June 2016











Conclusion:

Useful properties of CHSE and SSE cells for IHNV examinations:

persistence and frugality

resistance to bacteria

IHNV accessibility

mediation of IHNV infectivity

Acknowledgements:

we are indebted to

Maura Ferrari & Giovanni L. Alborali (Centro Substrati Cellulari, Istituto Zooprofilattico Sperimentale della Lombardia e dell' Emilia Romagna, Brescia)

Sandra Essbauer & Winfried Ahne (late Institute of Zoology and Hydrobiology, University of Munich)

Dieter Fichtner & Roland Riebe (Federal Research Center for Virus Diseases of Animals, Institute for Infectology, Insel Riems)

Heike Schütze & Peter-Joachim Enzmann (late Federal Research Center for Virus Diseases of Animals, Tübingen)

Nicole Nicolajsen & Niels Jørgen Olesen (late Danish Institute for Food and Veterinary Research, Fish Diseases Section, Aarhus)

You